



Software

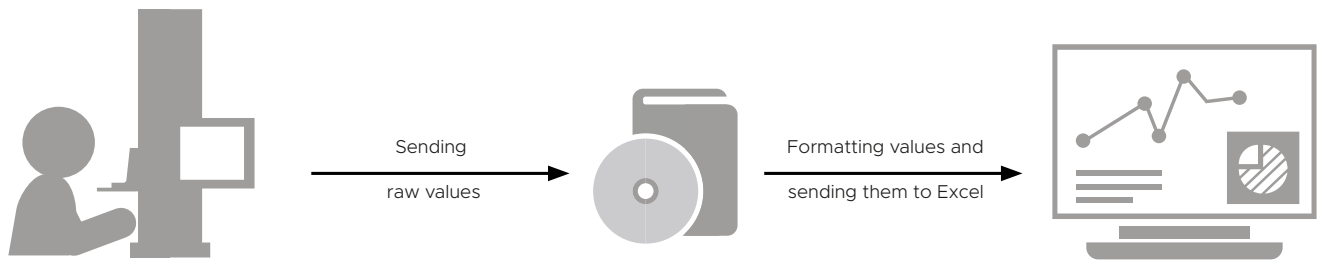


TESA
TECHNOLOGY

Software

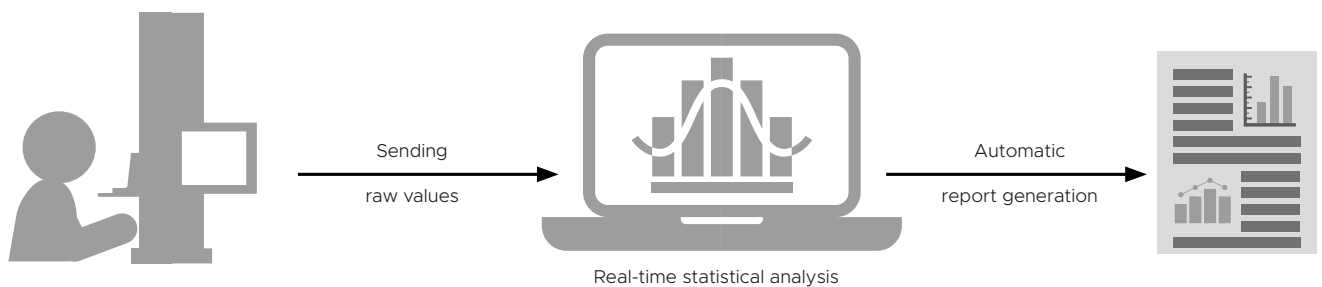
Fill out a report template in real time

With the TESA DATA-DIRECT software, one or several mechanical parts can be measured and the data can be automatically formatted in a previously prepared report template (for example Excel). Once the measurement has been recorded, the report is directly accessible.



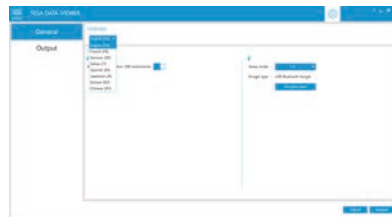
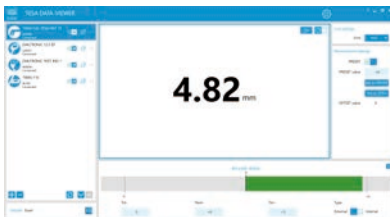
The quick and easy statistical software

The SPC (Statistical Process Control) TESA STAT-EXPRESS software is the way to calculate in real time all the important characteristics during statistical analyses. Quick to learn, it manages also automatically the measuring reports.



DATA-VIEWER

- AVAILABILITY
 - Software downloadable free of charge from the TESA website
- CONNECTIVITY
 - For receiving data via cable (USB)
 - For receiving data via Bluetooth®
 - Instruments automatically recognized and connected
 - Reception via USB dongle or integrated computer dongle (from Windows 10)
 - Possibility to connect up to 40 instruments simultaneously
 - Compatible with a USB foot pedal for sending values
- INTERFACE
 - Clear interface for easy handling without confusion
- DATA MANAGEMENT
 - Transmission of measured values from the measuring instrument or from DATA-VIEWER
 - Real-time export of results to EXCEL or Q-DAS software
 - Automatic creation of files in *.csv or *.txt formats
 - Data transmission format to an active field or a virtual port
- MEASUREMENT REPORT
 - Real-time filling of report templates created in external program (e.g. Excel)



Compatibility

- Wired connection TLC-USB
- Bluetooth® connection TLC-BLE
- DIALTRONIC serie
- USB pedal
- All instruments with an opto-RS232 output using the 04760178 adapter
- All instruments with a Sub-D 9p-RS232 output using the 04760179 adapter

Article number

Designation

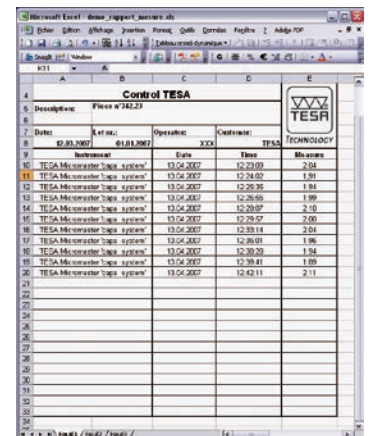
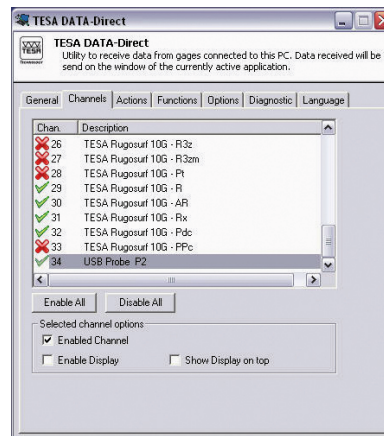
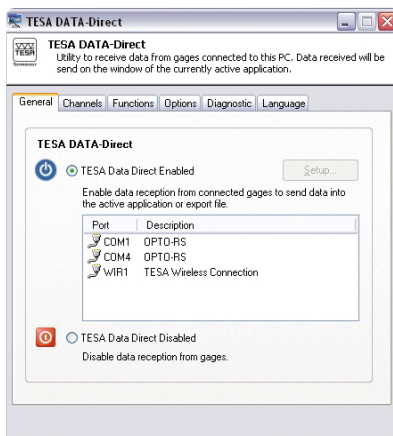
DATA-VIEWER

Free data acquisition software

Data processing software

DATA-DIRECT

- AVAILABILITY
 - Free limited version downloadable from the TESA website
- CONNECTIVITY
 - For data reception via cable (USB)
 - For data reception via Bluetooth® (through the use together with DATA-VIEWER)
 - Compatible with a USB foot pedal for sending values
- DATA MANAGEMENT
 - Transmission of measured values from the measuring instrument or from DATA-DIRECT
 - Real-time export of results to third-party processing software
 - Configurable data transmission format (Cells management)
 - Continuous transmission at a configurable regular interval (Data pooling)
 - Automatic creation of files in .csv format
- MEASUREMENT REPORT
 - Allows for real-time filling of report templates created in external program (e.g. Excel)



Compatibility

- All instruments connectable to DATA-VIEWER
- Customizable RS232 connection for all instruments on the market

Included in delivery

- Installation file and user manual provided on a USB drive
- USB license key (dongle)
- Declaration of conformity

Article number

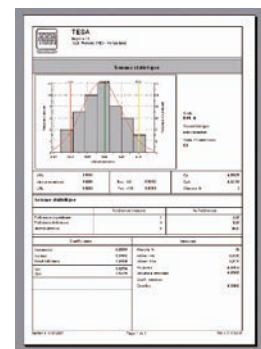
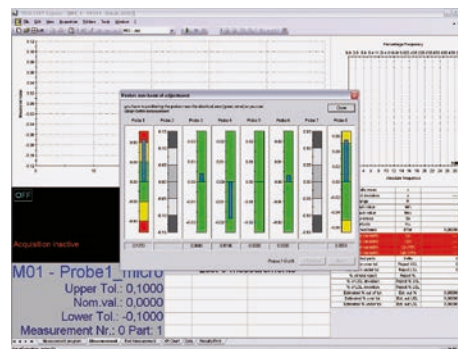
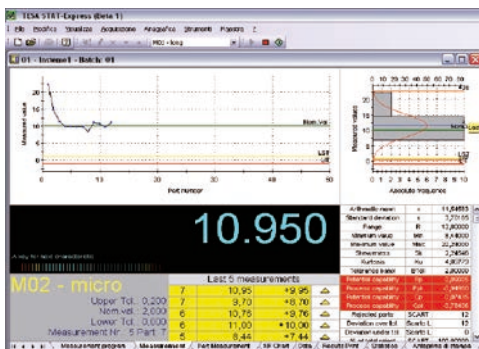
Designation

04981001

DATA-DIRECT software

STAT-EXPRESS

- AVAILABILITY
 - Free limited version downloadable from the TESA website
- CONNECTIVITY
 - For data reception via cable (USB)
 - For data reception via Bluetooth® (through the use together with DATA-VIEWER)
- MEASUREMENT
 - Measurements by part or by characteristic
 - Unlimited creation of measurement programs
 - Simultaneous acquisition of several measurement programs
 - PASS/FAIL classification on the display of the digital TWIN-CAL caliper
- DATA MANAGEMENT
 - Measured value is displayed in real time
 - Statistics calculation and XR control card in real time
 - Accesses protected by user level
 - Import/export of *.csv file
- MEASUREMENT REPORT
 - Report per measured characteristic or per measured part
 - Automatic creation of measurement protocols with photo and operational instruction
 - Complete report with statistics
 - Measurement report in *.pdf, *.html or other format



Compatibility	- All instruments connectable to DATA-VIEWER - Customizable RS232 connection for all instruments on the market
Included in delivery	Installation file and user manual provided on a USB flash drive USB license key (dongle) DATA-DIRECT software (included in STAT-EXPRESS)

Article number	Designation
04981002	STAT-EXPRESS software

Software for gauge block comparators

TESA UP

- RESULTS AND MEASUREMENT REPORTS
 - Customized measurement report templates
 - Real-time completion of measurement reports
 - Assignment of standard gauge blocks to their respective classes
 - Automatic sending of measurement reports via email
- FEATURES
 - Wide range of measurement methods
 - Selection of standard or custom quality classes
 - Customizable certificate templates
 - Automatic calculations and classifications based on inspection conditions
 - Client records and order management
 - Unlimited database
 - Data backup for gauge block sets
 - Automatic execution of all corrections (e.g., accounting for the actual dimension of reference standards and flattening due to the use of different types of materials (steel, carbide, ceramic), temperature compensation based on linear expansion coefficients)
 - Processing of metric and imperial values

Standard	ISO 3650
Units	mm / in
Software min. requirements	Windows 10 (32 or 64 bits) or later version
Hardware min. requirements	Processor: Intel core I3 or higher RAM minimum: 8 MB Hard disk: 500 GB
Compatibility	For any system upgrade to TESA UP 3.x please contact your local dealer to confirm the compatibility of TESA UP with your instrument.

Article number	Designation
05960042	TESA UP software, V3.x
05960043	TESA UP software, V3.x + computer

MEASUREMENT STUDIO

- COMPATIBILITY
 - For RUGOSURF 90G
- FUNCTIONS
 - Remote management of measurement start-up and calibration
 - Visualization of the measured parameters
 - Visualization of roughness profiles R, primary P and waviness W
 - Calculation of roughness parameters, including VDA parameters
 - Calculation of statistics from a set of measurements
 - Adjustable upper and lower tolerance for each parameter
 - Creation and storage of measurement programs (instrument settings and parameters to be measured)
 - Transferable measurement programs on the instrument
 - Measurement report with customizable header
 - 51 parameters available
- DATA MANAGEMENT
 - Connection to the instrument via USB
 - Import of saved measurements from the instrument to the computer, for the management of a database
 - Measurement report in *.xls, *.pdf, *.doc, *.rpt or *.rtf format



Par VDA 2007			
Parameter	Value	Tol-	Tol+
WDSm	0.273 μm		
WDc	0.971 μm		
WDt	2.243 μm		

Included in delivery

License key (dongle)
 USB-PC connection cable, 1,8 m
 Installation file and user manual provided on a USB drive

Article number

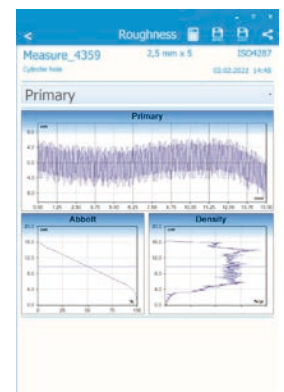
Designation

06960048 MEASUREMENT STUDIO software

Software for roughness gauges

DATA-STUDIO

- COMPATIBILITY
 - RUGOSURF 20 (wired connection)
 - TWIN-SURF (wired and Bluetooth® connection)
 - Wireless printer (Bluetooth®)
- FUNCTIONS
 - Remote management of measurement start and calibration
 - Visualization of the measured parameters
 - Visualization of the measured roughness profiles R, primary P and RK
 - Calculation of roughness parameters, including VDA parameters
 - Statistical calculations from several measurements
 - Adjustable upper and lower tolerance for each parameter
 - Creation and archiving of measurement programs (instrument settings and parameters to be measured)
 - Measurement programs transferable to the instrument
 - Measurement report for each parameter head
 - 57 parameters available with the Premium version
- DATA MANAGEMENT
 - Connection to the instrument via USB or Bluetooth® (depending on the instrument)
 - Import of measurements saved from the instrument to the computer for data base management
 - Printing of results with printer accessory
 - Measurement report in . xls and .pdf format



Included in delivery

USB key including:
Licence key
User manual
Software installation file

Article number	Designation
06960091	DATA-STUDIO software

