



Measuring supports and clamping equipment



TESA
TECHNOLOGY

TESA measuring stands are designed to provide the best stability for holding instruments such as dial gauges, lever-type indicators, or probes.

Stability is a key criteria as it minimizes uncertainties related to the measuring method.

The wide range of measuring stands offers a selection based on the useful measuring arm's range, the fixing base, or the instrument's mounting type.

These various configurations enable the optimization of your measurement solution.

TESA measuring stands



Suction support with articulated arm



Magnetic supports with articulated arm



Tiltable magnetic support



Small magnetic support



Support with ground table



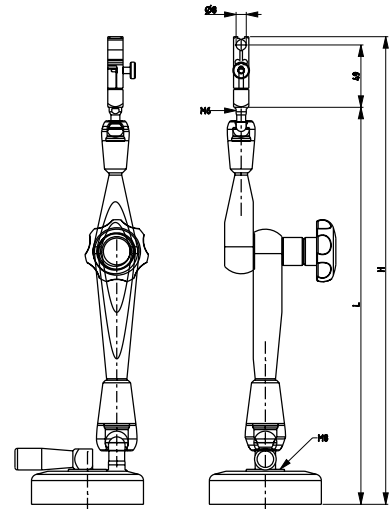
Support with granite table

Measuring supports and clamping equipment

Suction support with articulated arm



01639064

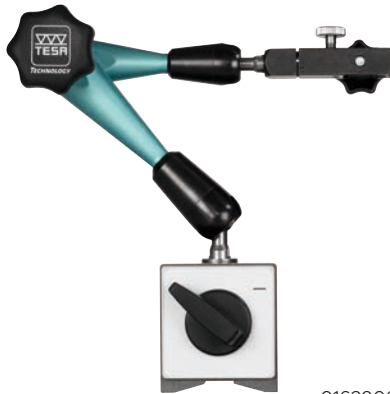


Material	Arm: Light alloy Base: Metallic
Dimensions	Base: Ø 88 x 28 mm
Function(s)	Suction controlled by lever switch Fine adjustment
Measuring instrument mount	Dovetail fixing bracket with circular clamping Ø 8 mm
Base	Suction cup force: 300 N
Included in delivery	Articulated arm Clamp with fine adjustment Suction base Declaration of conformity User manual

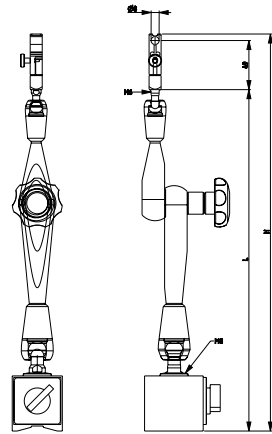
Article number	Designation	Height mm	Length mm	Base dimensions mm	Suction cup force N
01639064	Suction support with articulated arm	365	280	Ø 88 x 28	300



Magnetic supports with articulated arm



01639061



Material	Arm: Light alloy Base: Metallic
Function(s)	With switch to disengage the magnet Fine adjustment
Measuring instrument mount	Dovetail fixing bracket with circular clamping \varnothing 8 mm
Base	V-shaped
Included in delivery	Articulated arm Clamp with fine adjustment Magnetic base Declaration of conformity User manual

Article number	Designation	Height mm	Length mm	Base dimensions, mm	Dimensions of V, mm	Magnetic force N
01639060	Magnetic support with articulated arm	220	130	34 x 30 x 35	\varnothing 27 ÷ 76	300
01639061	Magnetic support with articulated arm	310	200	60 x 50 x 55	\varnothing 30 ÷ 150	800
01639062	Magnetic support with articulated arm	390	280	60 x 50 x 55	\varnothing 30 ÷ 150	800
01639063	Magnetic support with articulated arm	445	330	73 x 50 x 55	\varnothing 30 ÷ 150	1000



01639060



01639062



01639063



01639061

Supports with magnetic base

Magnetic support with flexible arm



01639020

Material	Arm: Metallic Base: Metallic
Dimensions	Base: 50 x 60 x 55 mm
Function(s)	With switch to disengage the magnet
Measuring instrument mount	Dovetail fixing bracket with circular clamping \varnothing 8 mm
Base	V-shaped, for \varnothing 30 ÷ 150 mm Magnetic force: 400 N
Included in delivery	Support Declaration of conformity

Article number	Designation	Height mm	Base dimensions mm	Dimensions of V mm	Magnetic force N
01639020	Magnetic support with flexible arm	350	60 x 50 x 55	\varnothing 30 ÷ 150	400

Magnetic support



01639070

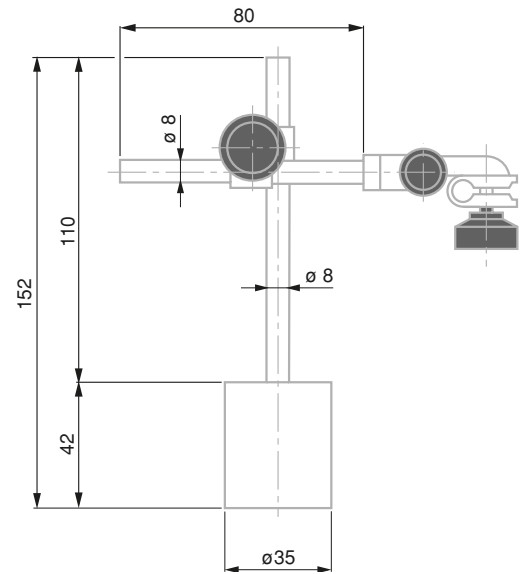
Material	Arm: Metallic Base: Metallic
Dimensions	Base: 60 x 50 x 55 mm
Function(s)	With switch to disengage the magnet Fine adjustment
Measuring instrument mount	Dovetail fixing bracket with circular clamping \varnothing 8 mm
Base	V-shaped, for \varnothing 30 ÷ 150 mm Magnetic force: 750 N
Included in delivery	Support Declaration of conformity

Article number	Designation	Height mm	Base dimensions mm	Dimensions of V mm	Magnetic force N
01639070	Magnetic support EASY	450	60 x 50 x 55	\varnothing 30 ÷ 150	750



Supports with magnetic base

Magnetic support



Material	Arm: Metallic Base: Metallic
Dimensions	Base: Ø 35 x 42 mm
Measuring instrument mount	Dovetail fixing bracket with circular clamping Ø 4 and Ø 8 mm
Base	Permanent magnet Magnetic force: 220 N
Included in delivery	Support Declaration of conformity

Article number	Designation	Height mm	Base dimensions mm	Magnetic force N
01639007	UJ15 magnetic support	152	Ø 35 x 42	220



Magnetic support



01639010

Material	Arm: Metallic Base: Metallic
Dimensions	Base: Ø 30 x 25 mm Main axis: Ø 6 mm
Function(s)	Articulated arm, 360°
Measuring instrument mount	Dovetail fixing bracket with circular clamping Ø 6 or Ø 8 mm
Base	Permanent magnet Magnetic force: 140 N
Included in delivery	Support Declaration of conformity

Article number	Designation	Height mm	Base dimensions mm	Magnetic force N
01639010	Support with magnetic base, articulated arm	90	Ø 30 x 25	140

Supports with table

Measuring support with articulated arm



01639065

Material	Support: Light alloy
Dimensions	Granite: 300 x 200 mm
Function(s)	Fine adjustment
Measuring instrument mount	Dovetail fixing bracket with circular clamping \varnothing 8 mm
Grade	0
Included in delivery	Articulated arm Clamp with fine adjustment Granite table User manual

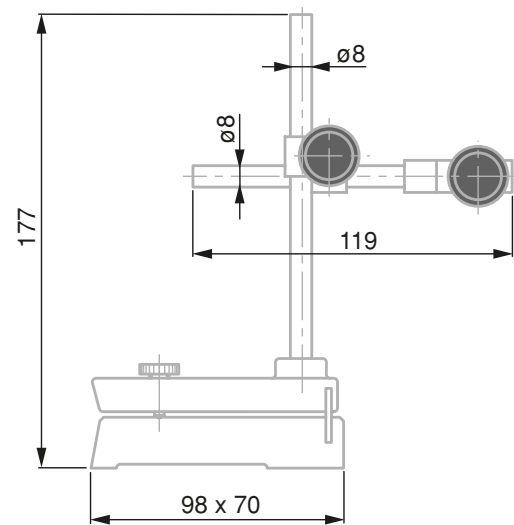
Article number	Designation
01639065	Measurement support with articulated arm



Inclinable measuring support



01639003



Material	Arm: Metallic Base: Cast iron
Function(s)	Base with front support face
Measuring instrument mount	Dovetail fixing bracket with circular clamping \varnothing 8 mm
Included in delivery	Support Declaration of conformity

Article number	Designation	Height mm	Base dimensions mm
01639003	Inclinable measuring support	177	98 x 70



Supports with table

UD12 measuring support



01639000

Material	Arm: Metallic Base: Cast iron
Function(s)	Support with lateral guiding faces T-slot for vertical column
Measuring instrument mount	Dovetail fixing bracket with circular clamping \varnothing 8 mm
Included in delivery	Support Declaration of conformity

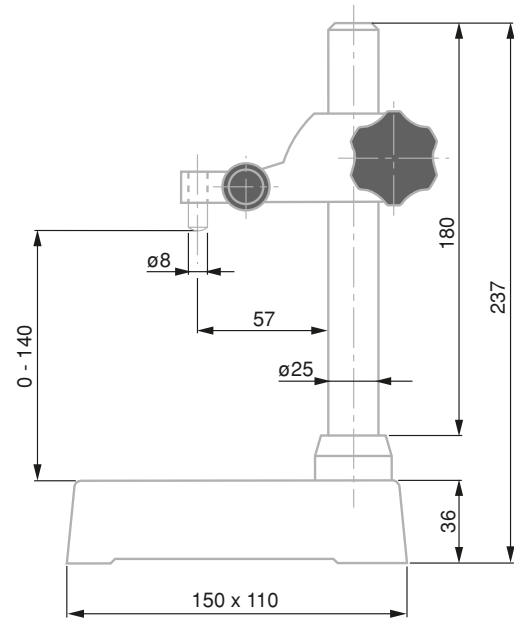
Article number	Designation	Height mm	Base dimensions mm
01639000	UD12 measuring support	243	200 x 55 x 35



Measuring support with UA1 ground surface table



01639008



Application range	0 ÷ 140 mm
Material	Table: Cast iron Column: Chrome steel Arm: Spheroidal graphite cast iron
Dimensions	Ground side: 100 x 100 mm
Function(s)	Column can be dismantled
Measuring instrument mount	Measuring arm with clamp \varnothing 8 mm
Included in delivery	Support Declaration of conformity

Article number	Designation	Height mm	Measuring face(s)	Material
01639008	UA1 measuring support with ground table	237	100 x 100	Base: Cast iron

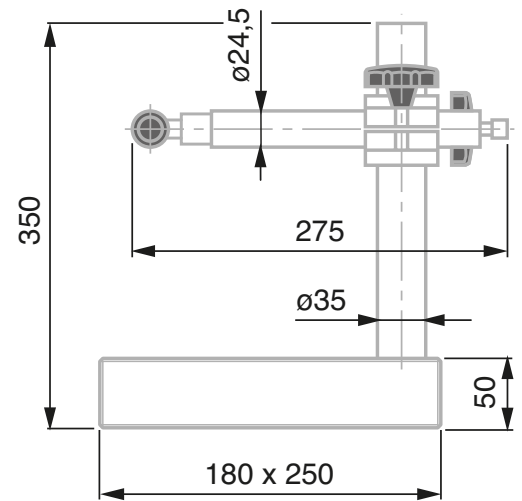


Supports with table

Measuring support with granite table



01639033



Application range	0 ÷ 260 mm
Material	Column: Chrome plated
Dimensions	Table: 180 x 250 x 50 mm Axis: Ø 35 mm Working surface: 180 x 200 mm
Function(s)	Horizontal sliding arm Fine adjustment
Measuring instrument mount	Circular clamping Ø 4 mm or Ø 8 mm for dovetail or lug
Grade	00
Flatness	3 µm
Included in delivery	Support Declaration of conformity

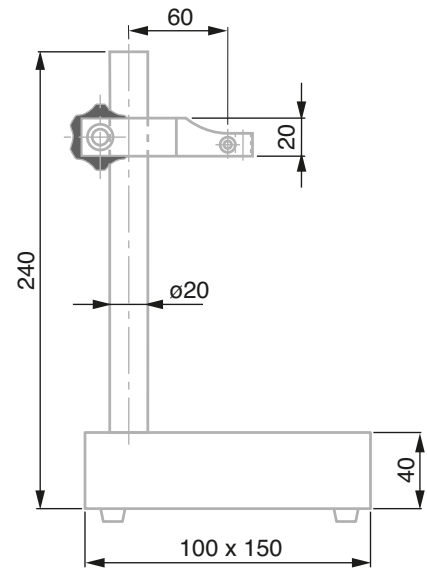
Article number	Designation	Height mm	Base dimensions mm
01639033	Measuring support with granite table	350	180 x 250 x 50



Measuring support with granite table



01639035



Application range	0 ÷ 170 mm
Material	Table: Granite Pole: Steel Holder: Aluminium
Dimensions	Base: 100 x 150 x 40 mm
Measuring instrument mount	Circular clamping Ø 8 mm
Grade	00
Flatness	3 µm
Included in delivery	Support Declaration of conformity

Article number	Designation	Height mm	Base dimensions mm	Application range mm
01639035	Measuring support with granite table	240	100 x 150 x 40	0 ÷ 170

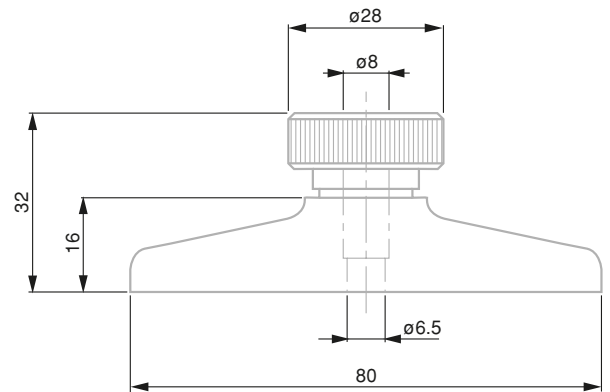


Depth foot

Depth foot with flat face

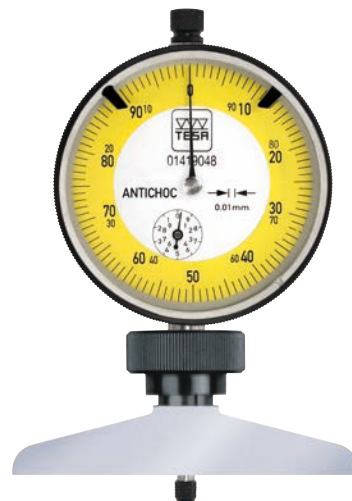


01639046

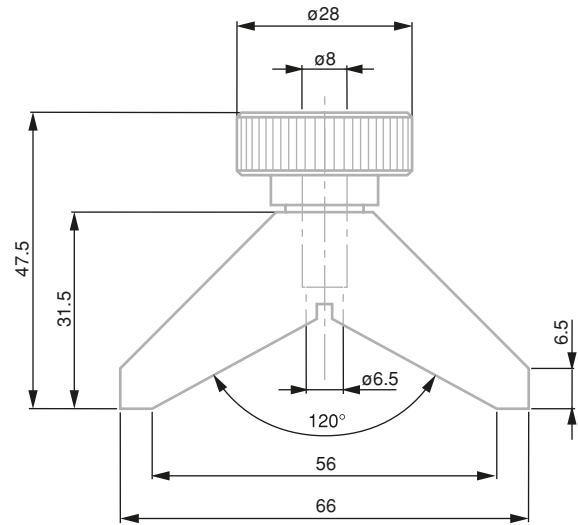


Material	Hardened steel
Dimensions	Measuring face: 80 x 16 mm
Measuring instrument mount	Mounting with clamping bracket Ø 8 mm
Measuring face(s)	Fine ground measuring face
Flatness	4 µm
Included in delivery	Support Declaration of conformity

Article number	Designation	Base dimensions mm
01639046	Depth foot with flat face	80 x 16

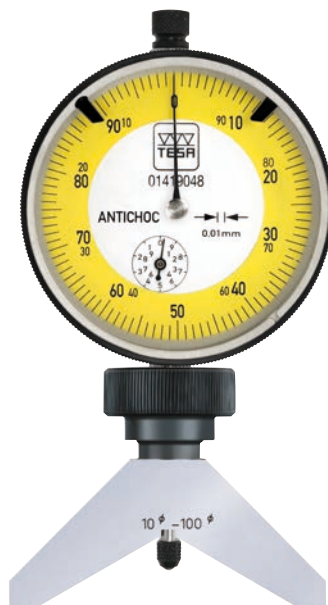


Depth foot with V-shaped face



Material	Hardened steel
Dimensions	Measuring faces: 5 x 16 mm
Measuring instrument mount	Mounting with clamping bracket Ø 8 mm
Base	V-groove, for Ø 10 ÷ 100 mm
Measuring face(s)	Fine ground measuring faces
Flatness	6 µm
Included in delivery	Support Declaration of conformity

Article number	Designation	Base dimensions mm	Dimensions of V mm
01639047	Depth foot with V-shaped base	Each face: 5 x 16	Ø 10 ÷ 100



Fixing blocks

Measurement base for squares



05360030

Material	Base: Light alloy
Dimensions	Base: 200 x 100 mm Drilling: 20 x 20 mm with M5 thread
Parallelism	0,5 µm
Flatness	0,5 µm
Included in delivery	Base Stop-bar Mounting bracket SCS calibration certificate

Article number	Designation	Base dimensions mm
05360030	Base square check	200 x 100

Swivel clamps



01860401

Article number	Designation
01860401	Clamp with dovetail mount, clamping = \varnothing 5,6 and \varnothing 9,5 mm
01860402	Clamp with dovetail mount, clamping = \varnothing 7 and 9,5 mm
074108603	Clamp with dovetail mount, clamping = \varnothing 7/32 and 5/32 in

Rotating holder

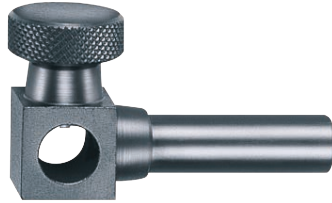


SPT

Article number	Designation
SPT	Rotating support, shaft = \varnothing 8 x 25 mm, clamping = \varnothing 4,1 mm

Fixing accessories

Squares holders



01840406



01850406

Article number	Designation
01840406	Bracket support, shaft = Ø 8 x 25 mm, clamping = Ø 8 mm
01850406	Bracket support, shaft = Ø 3/8 x 3.5 in, clamping = Ø 3/8 in

Swivel holders



01840404



01840407



01850404



01840405

Article number	Designation
01840404	Swivel holder with dovetail mount, shaft = Ø 8 x 25 mm
01850404	Swivel holder with dovetail grip, shaft = Ø 3/8 x 1 in
01840405	Swivel holder with dovetail clamp, shaft = Ø 8 x 90 mm
01850405	Swivel holder with dovetail grip, shaft = Ø 3/8 x 3-5/8 in
01840407	Swivel holder with dovetail grip, fine adjustment device, shaft = Ø 8 x 125 mm
074106026	Swivel holder with dovetail grip, shaft = Ø 8 x 133 mm, clamping = Ø 4 and Ø 7 mm
074106931	Swivel holder with dovetail grip, shaft = Ø 3/8 x 5-1/4 in, clamping = Ø 4 and Ø 7 mm
074106331	Swivel holder with dovetail grip, shaft = 6 x 12,6 x 76 mm, clamping = Ø 4 and Ø 5,5 mm

Fixing rod with pin



01840202



01850203



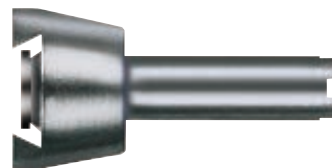
074111481

Article number	Designation
01840202	Fixing rod, pin = \varnothing 5,6 mm, shaft = 8 x 80 mm
01850202	Fixing rod, pin = \varnothing 7/32 in, axis = \varnothing 3/8 x 3.5 in
01850203	Fixing rod, pin = \varnothing .22 in, shaft = 1/4 x 1/2 x 3 in
074111481	Fixing rod, pin = \varnothing 5/32 in, pole = 3/16 x 5/16 in

Rigid fixing rods with dovetail attachment



01840105



01840104

Article number	Designation
01840104	Dovetail fixing rod, shaft = \varnothing 4 x 13 mm
01840105	Dovetail fixing rod, shaft = \varnothing 8 x 13 mm
01850104	Dovetail fixing rod, shaft = \varnothing 5,55 x 13 mm
01850105	Dovetail fixing rod, shaft = \varnothing 6,35 x 13 mm
01860008	Dovetail fixing rod, axis = \varnothing 6 x 13 mm

Fixing accessories

Swivelling fixing rods with dovetail attachment



01840408

Article number	Designation
01840408	Dovetail fixing rod, swivelling, shaft = Ø 4 x 64,35 mm
01840409	Dovetail fixing rod, swivelling, shaft = Ø 8 x 64,35 mm

Centering holder



01840501

Article number	Designation
01840501	Centering holder, shaft = Ø 4 x 25 mm, clamping = Ø 4 mm

Mounting backs for DIALTRONIC dial gauges



01960100

Article number	Designation	Composed of
01960100	Back with central lug, for DIALTRONIC dial gauge	Mounting back 4x M2 x 4 mm screw

Mounting backs for analogue dial gauges



01462004

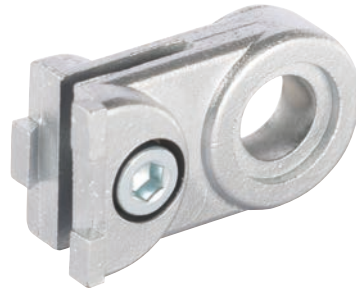


01460020

Article number	Designation	Composed of
01462004	Back with central lug, for IP40 dial gauges with Ø 40 or Ø 44,5 mm dial	Mounting back 3x M1,5 x 4 mm screw
01462005	Back with central lug, for IP40 dial gauges with Ø 58 or Ø 61,5 mm dial	Mounting back 3x M2 x 4 mm screw
01460020	Back with central lug, for IP67 dial gauges with Ø 40 or Ø 44,5 mm dial	Mounting back 3x M2 x 6 mm screw
01460021	Back with central lug, for IP67 dial gauges with Ø 58 or Ø 61,5 mm dial	Mounting back 3x M3 x 5,5 mm screw

Fixing accessories

Mounting backs for lever-type test indicators



03238013

Article number	Designation
03238013	Dovetail mounting lug, Ø 6,4 mm

Reducing sleeves



074108942

Article number	Designation
074108942	Reducing sleeve, Ø 8 mm - Ø 4 mm
074108943	Reducing sleeve, Ø 3/8 in - Ø 5/32 in
03560101	Reducing sleeve, Ø 9,5 mm - Ø 8 mm

